

antares



be  Italian dal 1874



---

# antares

---



LIVING

living  
salle de séjour  
wohnene  
viviente



BAGNO

bathrooms  
salle de bain  
bad  
cuarto de baño



COMMERCIALE  
LEGGERO

tiles for light commercial traffic area  
passage léger  
gewerblichen bereich  
pequeña superficie comercial

---





antares

ANTARES BT MIX | ANTARES 10B | ANTARES 10T | ANTARES 46B





antares

ANTARES BT MIX | ANTARES 10B | ANTARES 10T | ANTARES 46B







ANTARES 50T

antares





ANTARES 50T

antares









ANTAR.16GN MIX | ANTARES 16G | ANTARES 16N

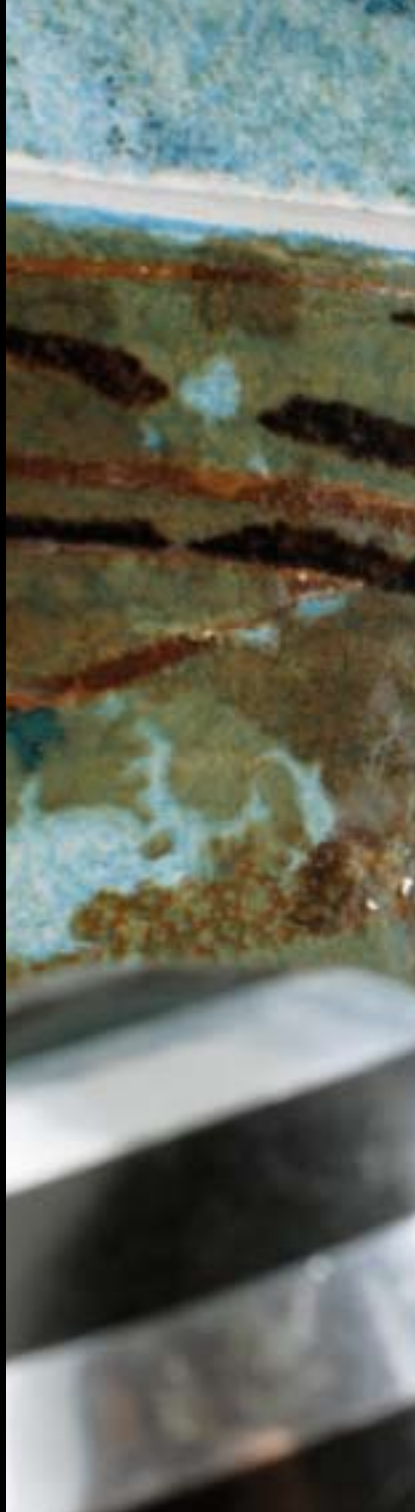
antares





ANTAR.16GN MIX | ANTARES 16G | ANTARES 16N

antares







antares

ANTARES 50N









ANTARES 50N

antares



ghtest coincidence,  
was leaving,  
ng him back.  
ays being stuck in

the slightest coin  
and yet sign  
the outside  
was being

A casual de  
ngia by h  
ebizhuo eit





ANTARES GN MIX | ANTARES 10G | ANTARES 10N | ANTARES 46G | ANTARES 46N | ANTARES 48N

antares





ANTARES GN MIX | ANTARES 10G | ANTARES 10N | ANTARES 46G | ANTARES 46N

antares





## destinazione d'uso

suggested applications / destination / anwendungsbereich / lugar de empleo



BAGNO

LIVING

COMMERCIALE LEGGERO

bathrooms  
salle de bain  
bad  
cuarto de baño

living  
salle de séjour  
wohnene  
viviente

tiles for light commercial traffic area  
passage léger  
gewerblichen bereich  
pequeña superficie comercial

## indicazione d'uso

suggested applications / indication d'utilisation / anwendungsbereich / forma de empleo



PAVIMENTO

RIVESTIMENTO

floor tiles  
sol  
boden  
piso

wall tiles  
revêtement  
wand  
revestimiento

## bordo

edge / bord / rand / borde



DRITTO

straight  
droit  
gerade  
derecho

## finitura superficiale

finishes / finition de la surface / oberfläche / acabado superficial



NATURALE

natural  
naturel  
natur  
matt

## stonalizzazione

shade variation / variation de nuances / schattierung / destonalización



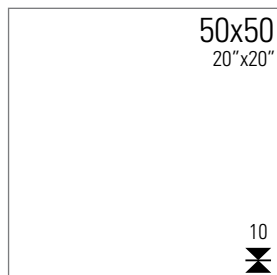
V3

# Porcellanato smaltato

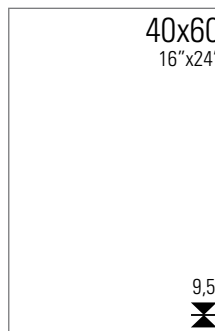
Glazed porcelain tiles - Grès cérame émaillé - Glasiertes Feinsteinzeug - Porcelánico esmaltado



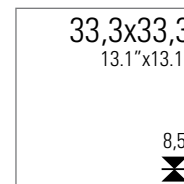
## ANTARES B



ANTARES 50B  
PEI 4



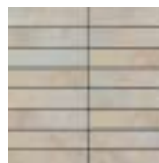
ANTARES 46B  
PEI 4



ANTARES 33B  
PEI 4



MK.ANTARES 25B  
25x50 - 10"x20"



MK.ANTARES 30B  
30x30 - 12"x12"

L.INOX 50  
1x50 - 0.4"x20"

L.ANTARES 2  
4x50 - 1.6"x20"

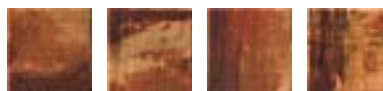
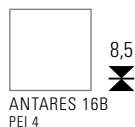
### Pezzi speciali

Trims  
Pièces spéciales  
Sonderstücke  
Piezas especiales

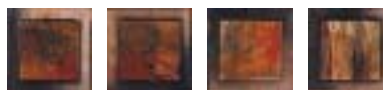


ANTARES BT 50B  
9,5x50 - 3.7"x20"

16,5x16,5  
6.5"x6.5"



ANTAR.16BT MIX



MULL 16BT MIX

10x10  
4"x4"



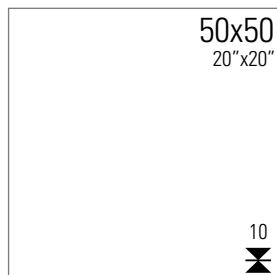
ANTARES BT MIX

# Porcellanato smaltato

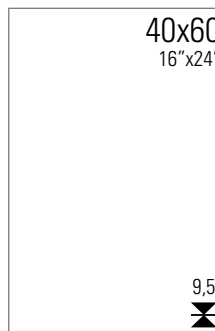
Glazed porcelain tiles - Grès cérame émaillé - Glasiertes Feinsteinzeug - Porcelánico esmaltado



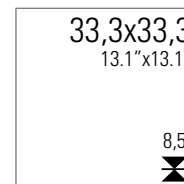
## ANTARES T



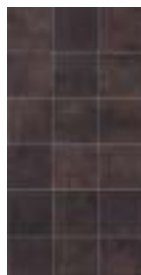
ANTARES 50T  
PEI 4



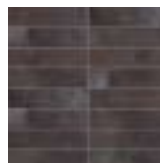
ANTARES 46T  
PEI 4



ANTARES 33T  
PEI 4



MK.ANTARES 25T  
25x50 - 10"x20"



MK.ANTARES 30T  
30x30 - 12"x12"

L.INOX 50  
1x50 - 0.4"x20"

L.ANTARES 2  
4x50 - 1.6"x20"

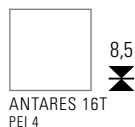
### Pezzi speciali

Trims  
Pièces spéciales  
Sonderstücke  
Piezas especiales

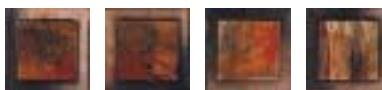


ANTARES BT 50T  
9,5x50 - 3.7"x20"

16,5x16,5  
6.5"x6.5"



ANTAR.16BT MIX



MULL 16BT MIX

10x10  
4"x4"



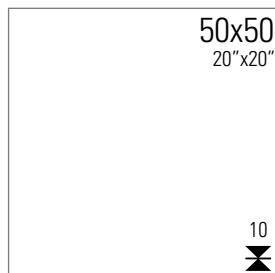
ANTARES BT MIX

# Porcellanato smaltato

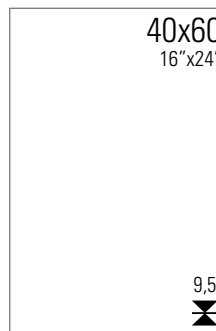
Glazed porcelain tiles - Grès cérame émaillé - Glasiertes Feinsteinzeug - Porcelánico esmaltado



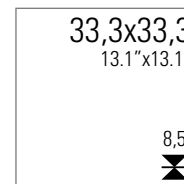
## ANTARES G



ANTARES 50G  
PEI 4



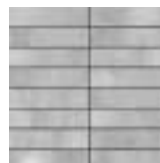
ANTARES 46G  
PEI 4



ANTARES 33G  
PEI 4



MK.ANTARES 25G  
25x50 - 10"x20"



MK.ANTARES 30G  
30x30 - 12"x12"

L.INOX 50  
1x50 - 0.4"x20"



L.ANTARES 1  
4x50 - 1.6"x20"

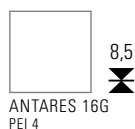
### Pezzi speciali

Trims  
Pièces spéciales  
Sonderstücke  
Piezas especiales

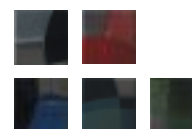


ANTARES BT 50G  
9,5x50 - 3.7"x20"

16,5x16,5  
6.5"x6.5"



10x10  
4"x4"

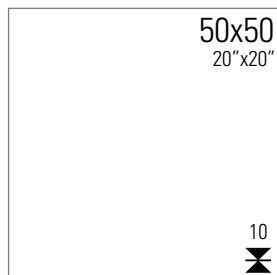


# Porcellanato smaltato

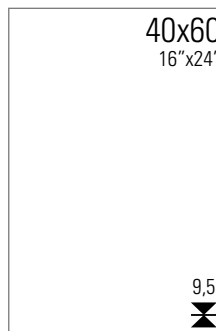
Glazed porcelain tiles - Grès cérame émaillé - Glasiertes Feinsteinzeug - Porcelánico esmaltado



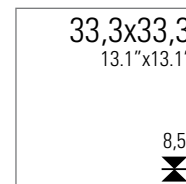
## ANTARES N



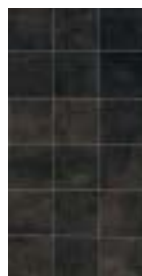
ANTARES 50N  
PEI 4



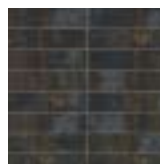
ANTARES 46N  
PEI 4



ANTARES 33N  
PEI 4



MK.ANTARES 25N  
25x50 - 10"x20"



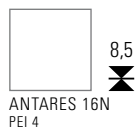
MK.ANTARES 30N  
30x30 - 12"x12"

L.INOX 50  
1x50 - 0.4"x20"



L.ANTARES 1  
4x50 - 1.6"x20"

16,5x16,5  
6.5"x6.5"

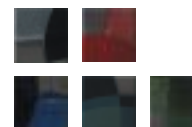


ANTAR.16GN MIX



MULL.16GN MIX

10x10  
4"x4"



ANTARES GN MIX

### Pezzi speciali

Trims  
Pièces spéciales  
Sonderstücke  
Piezas especiales



ANTARES BT 50N  
9,5x50 - 3.7"x20"





# Cooperativa Ceramica d'Imola per l'ambiente



**Progetto life**  
European Commission  
LIFE05 ENV / IT / 000875 P.S.V.

Cooperativa Ceramica d'Imola, consapevole che l'ambiente è un bene comune da tutelare e difendere, da sempre è impegnata affinché impianti produttivi ed attività produttive siano integrate il più possibile all'interno del territorio che le accoglie. L'impegno in questa direzione ha ottenuto il recente riconoscimento da parte dell'Unione Europea che ha scelto il progetto P.S.V. di Cooperativa Ceramica d'Imola come strumento di ricerca da inquadrare all'interno del programma Life Ambiente.

## **Progetto P.S.V. di Cooperativa Ceramica d'Imola Life05 ENV/IT/00875**

Il Progetto P.S.V. (Polishing Sludge Valorisation) di Cooperativa Ceramica d'Imola prevede la realizzazione di un processo ecologico per la valorizzazione dei reflui derivanti dalle lavorazioni dei materiali ceramici e affini tramite mineralizzazione ad elevata temperatura.

## Cooperativa Ceramica d'Imola for the environment

Cooperativa Ceramica d'Imola knows that the environment is a common good to be safeguarded and protected. For this reason Cooperativa Ceramica d'Imola has always been committed to integrate production systems and activities with their territory as much as possible. This commitment has been recently recognised by the European Union, which chose the P.S.V. Project of Cooperativa Ceramica d'Imola as the research tool to be included in the Life Environment programme.

P.S.V. PROJECT OF COOPERATIVA CERAMICA D'IMOLA LIFE05 ENV/IT/00875

The P.S.V. PROJECT (Polishing Sludge Valorisation) of Cooperativa Ceramica d'Imola provides for the creation of an eco-friendly project for the valorisation of the waste materials derived from the processing of ceramic materials and similar products by means of high temperature mineralisation.

## Cooperativa Ceramica d'Imola for the environment

Cooperativa Ceramica d'Imola knows that the environment is a common good to be safeguarded and protected. For this reason Cooperativa Ceramica d'Imola has always been committed to integrate production systems and activities with their territory as much as possible. This commitment has been recently recognised by the European Union, which chose the P.S.V. Project of Cooperativa Ceramica d'Imola as the research tool to be included in the Life Environment programme.

P.S.V. PROJECT OF COOPERATIVA CERAMICA D'IMOLA LIFE05 ENV/IT/00875

The P.S.V. PROJECT (Polishing Sludge Valorisation) of Cooperativa Ceramica d'Imola provides for the creation of an eco-friendly project for the valorisation of the waste materials derived from the processing of ceramic materials and similar products by means of high temperature mineralisation.

## Cooperativa Ceramica d'Imola für das Ambiente

Die Cooperativa Ceramica d'Imola agiert mit dem Bewusstsein, dass die Umwelt ein gemeinsames zu schützendes und zu verteidigendes Gut ist und setzt sich deshalb seit jeher dafür ein, dass die Produktionsanlagen und die Produktionstätigkeiten so weit wie möglich in das Einsatzgebiet integriert werden. Der Einsatz in diese Richtung wurde kürzlich von der Europäischen Union ausgezeichnet, da das Projekt P.S.V. (Polishing Sludge Valorisation) der Cooperativa Ceramica d'Imola als Forschungskonzept ausgewählt wurde, das in das Programm "Life Ambiente" eingegliedert werden soll.

PROJEKT P.S.V. DER COOPERATIVA CERAMICA D'IMOLA LIFE05 ENV/IT/00875

Das Projekt P.S.V. (Polishing Sludge Valorisation) der Cooperativa Ceramica d'Imola beinhaltet die Realisierung eines Ökoprozesses für die Aufwertung der Nebenprodukte, die bei der Verarbeitung von Keramikmaterialien und anderen Produkten durch die Mineralisierung bei hoher Temperatur entstehen.

## Cooperativa Ceramica d'Imola para el medioambiente

Cooperativa Ceramica d'Imola, consciente de que el medioambiente es un bien común a proteger y defender, desde siempre se compromete a integrar lo más posible sus establecimientos industriales y actividades productivas en el territorio en el que se ubican. Este compromiso ha sido recientemente reconocido por la Unión Europea que eligió el proyecto P.S.V. de Cooperativa Ceramica d'Imola como medio de investigación bajo el marco del programa Life Medioambiente.

PROYECTO P.S.V. DE COOPERATIVA CERAMICA D'IMOLA LIFE05 ENV/IT/00875

El Proyecto P.S.V. (Polishing Sludge Valorisation) de Cooperativa Ceramica d'Imola contempla la realización de un proceso ecológico para aprovechar los finos procedentes de la producción de materiales cerámicos y similares mediante mineralización a elevada temperatura.



**COOPERATIVA CERAMICA D'IMOLA**

Via V. Veneto, 13 - 40026 Imola BO - Italia

Tel. +39 0542 601601 - Fax +39 0542 31749

[www.imolaceramica.it](http://www.imolaceramica.it) - [imola@imolaceramica.it](mailto:imola@imolaceramica.it)