


xeno

designcollection



be  Italian dal 1874



xeno

designcollection



CUCINA

kitchens
cuisine
küche
cocina



BAGNO

bathrooms
salle de bain
bad
cuarto de baño



LIVING

living
salle de séjour
wohnene
viviente



COMMERCIALE LEGGERO

tiles for light commercial traffic area
passage léger
Gewerblichen bereich
pequeña superficie comercial





TARXENO | XENO 16B | XENO 50B | XENO 50T

xeno





TARXENO | XENO 50B | XENO 50T

xeno









XENO 16B | TARXENO | XENO 50B | XENO 50T

xeno







L.XENO | XENO 50G | XENO 50N

xeno











NEREIDE PT MIX | XENO 16F

xeno





xeno



PHOBOS 10V MIX | XENO 10V

destinazione d'uso

suggested applications / destination / anwendungsbereich / lugar de empleo



CUCINA

kitchens
cuisine
küche
cocina



BAGNO

bathrooms
salle de bain
bad
cuarto de baño



LIVING

living
salle de séjour
wohnene
viviente



COMMERCIALE LEGGERO

tiles for light commercial traffic area
passage léger
Gewerblichen bereich
pequeña superficie comercial

indicazione d'uso

suggested applications / indication d'utilisation / anwendungsbereich / forma de empleo



PAVIMENTO

floor tiles
sol
boden
piso



RIVESTIMENTO

wall tiles
revêtement
wand
revestimiento

finitura superficiale

finishes / finition de la surface / oberfläche / acabado superficial



STRUTTURATO

slate cut
structuré
strukturiert
Estructurado

bordo

edge / bord / rand / borde



DRITTO

straight
droit
gerade
derecho

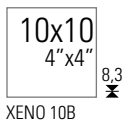
stonalizzazione

shade variation / variation de nuances / schattierung / destonalización



V3

XENO B



XENO 10B



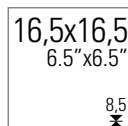
PHOBOS 10B MIX



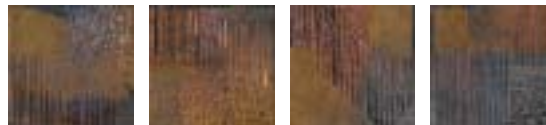
DIDO 10B MIX



JANUS 10 B1

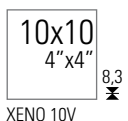


XENO 16B



NEREIDE AU MIX

XENO V



XENO 10V



PHOBOS 10V MIX



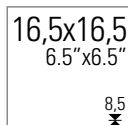
DIDO 10V MIX



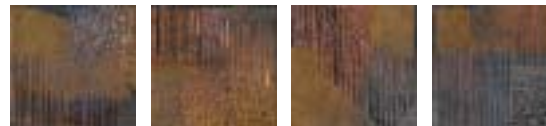
JANUS 10V1



LYMAN 10V1



XENO 16V



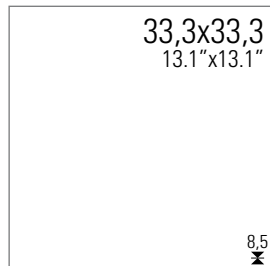
NEREIDE AU MIX

Porcellanato smaltato

Glazed porcelain tiles - Grès cérame émaillé - Glasiertes Feinsteinzeug - Porcelánico esmaltado

Pavimenti

Floor tiles - Sol - Bodenfliese - Pavimento



XENO 33B
PEI 4



XENO B33B
8x33 - 3.1" x 13.1"



XENO 50B
PEI 4



L.XENO
5x50 - 2" x 20"



L.XENO B
5x50 - 2" x 20"



T.XENO B
5x5 - 2" x 2"



TARXENO 1
10,5x50 - 4.1" x 20"



TARXENO
12x50 - 4.7" x 20"



A.XENO
12x12 - 4.7" x 4.7"



XENO 33V
PEI 4



XENO B33V
8x33 - 3.1" x 13.1"



XENO 50V
PEI 4



L.XENO
5x50 - 2" x 20"



L.XENO V
5x50 - 2" x 20"



T.XENO V
5x5 - 2" x 2"



TARXENO 2
10,5x50 - 4.1" x 20"



TARXENO
12x50 - 4.7" x 20"



A.XENO
12x12 - 4.7" x 4.7"



XENO N



10x10
4"x4"
8,3
X

XENO 10N



PHOBOS 10GN MIX

B.XENO N
2x10 - 0.8"x4"



DIDO 10N MIX

L.DIDO N
1.5x10 - 0.6"x4"



JANUS 10G1



LYMAN 10N1

L.LYMAN N
2.5x10 - 1"x4"

16,5x16,5
6.5"x6.5"
8,5
X

XENO 16N



NEREIDE PT MIX

XENO W



10x10
4"x4"
8,3
X

XENO 10W



DIDO 10W MIX

B.XENO N
2x10 - 0.8"x4"

L.DIDO N
1.5x10 - 0.6"x4"

Porcellanato smaltato

Glazed porcelain tiles - Grès cérame émaillé - Glasiertes Feinsteinzeug - Porcelánico esmaltado

Pavimenti

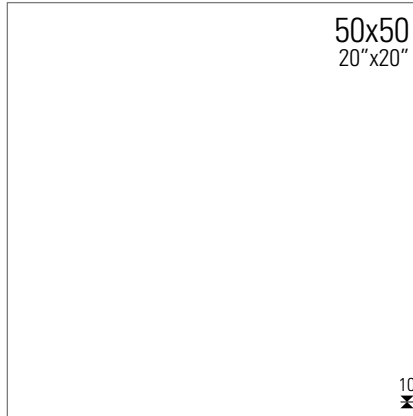
Floor tiles - Sol - Bodenfliese - Pavimento



XENO 33N
PEI 4



XENO B33N
8x33 - 3.1" x 13.1"



XENO 50N
PEI 4



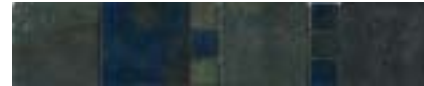
L.XENO
5x50 - 2" x 20"



L.XENO N
5x50 - 2" x 20"



T.XENO N
5x5 - 2" x 2"



TARXENO 2
10,5x50 - 4.1" x 20"



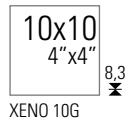
TARXENO
12x50 - 4.7" x 20"



A.XENO
12x12 - 4.7" x 4.7"



XENO G



XENO 10G



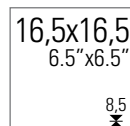
PHOBOS 10GN MIX



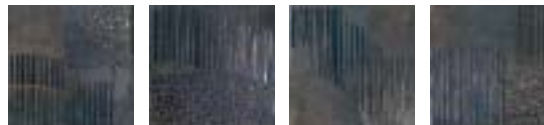
DIDO 10G MIX



JANUS 10G1

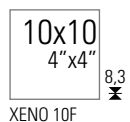


XENO 16G



NEREIDE PT MIX

XENO F



XENO 10F



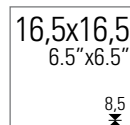
PHOBOS 10F MIX



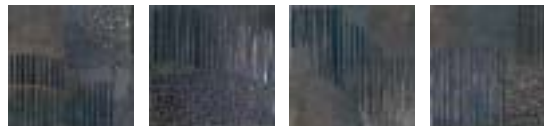
DIDO 10F MIX



JANUS 10V1



XENO 16F



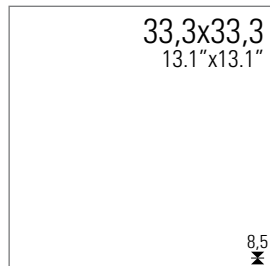
NEREIDE PT MIX

Porcellanato smaltato

Glazed porcelain tiles - Grès cérame émaillé - Glasiertes Feinsteinzeug - Porcelánico esmaltado

Pavimenti

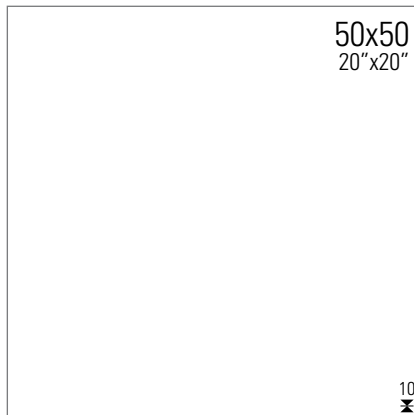
Floor tiles - Sol - Bodenfliese - Pavimento



XENO 33G
PEI 4



XENO B33G
8x33 - 3.1"x13.1"



XENO 50G
PEI 4



L.XENO
5x50 - 2"x20"



L.XENO G
5x50 - 2"x20"



T.XENO G
5x5 - 2"x2"



TARXENO 2
10,5x50 - 4.1"x20"



L.XENO
12x50 - 4.7"x20"



A.XENO
12x12 - 4.7"x4.7"



XENO 33F
PEI 4



XENO B33F
8x33 - 3.1"x13.1"



XENO 50F
PEI 4



L.XENO
5x50 - 2"x20"



L.XENO F
5x50 - 2"x20"

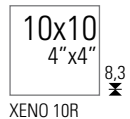


T.XENO F
5x5 - 2"x2"



TARXENO 2
10,5x50 - 4.1"x20"

XENO R



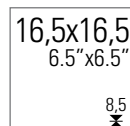
XENO 10R



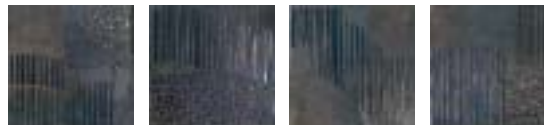
PHOBOS 10R MIX



DIDO 10R MIX

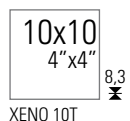


XENO 16R



NEREIDE PT MIX

XENO T



XENO 10T



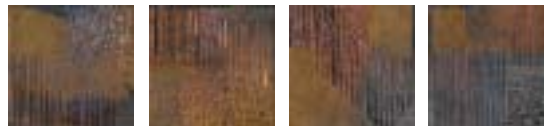
PHOBOS 10T MIX



DIDO 10T MIX



XENO 16T



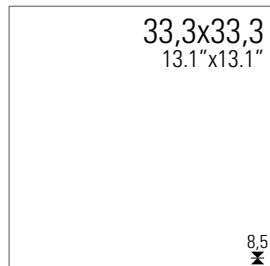
NEREIDE AU MIX

Porcellanato smaltato

Glazed porcelain tiles - Grès cérame émaillé - Glasiertes Feinsteinzeug - Porcelánico esmaltado

Pavimenti

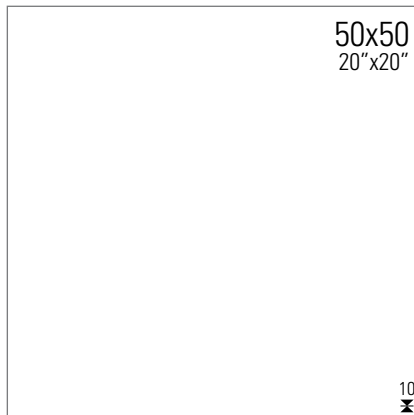
Floor tiles - Sol - Bodenfliese - Pavimento



XENO 33R
PEI 4



XENO B33R
8x33 - 3.1" x 13.1"



XENO 50R
PEI 4



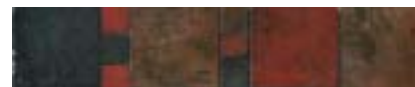
L.XENO
5x50 - 2" x 20"



L.XENO R
5x50 - 2" x 20"



T.XENO R
5x5 - 2" x 2"



TARXENO 1
10,5x50 - 4.1" x 20"



TARXENO
12x50 - 4.7" x 20"



A.XENO
12x12 - 4.7" x 4.7"



XENO 33T
PEI 4



XENO B33T
8x33 - 3.1" x 13.1"



XENO 50T
PEI 4



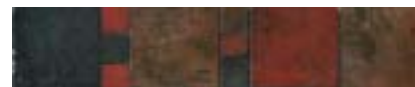
L.XENO
5x50 - 2" x 20"



L.XENO T
5x50 - 2" x 20"



T.XENO T
5x5 - 2" x 2"



TARXENO 1
10,5x50 - 4.1" x 20"



TARXENO
12x50 - 4.7" x 20"



A.XENO
12x12 - 4.7" x 4.7"

Cooperativa Ceramica d'Imola for the environment

Cooperativa Ceramica d'Imola knows that the environment is a common good to be safeguarded and protected. For this reason Cooperativa Ceramica d'Imola has always been committed to integrate production systems and activities with their territory as much as possible. This commitment has been recently recognised by the European Union, which chose the P.S.V. Project of Cooperativa Ceramica d'Imola as the research tool to be included in the Life Environment programme.

P.S.V. PROJECT OF COOPERATIVA CERAMICA D'IMOLA LIFE05 ENV/IT/00875

The P.S.V. PROJECT (Polishing Sludge Valorisation) of Cooperativa Ceramica d'Imola provides for the creation of an eco-friendly project for the valorisation of the waste materials derived from the processing of ceramic materials and similar products by means of high temperature mineralisation.

Cooperativa Ceramica d'Imola: une position pour l'environnement

Consciente du fait que l'environnement est un patrimoine dont chacun de nous est responsable, Cooperativa Ceramica d'Imola a toujours œuvré dans le but de le sauvegarder, en faisant le maximum pour que ses usines de production et toutes ses activités productives intègrent le territoire sur lequel elles sont implantées. Cet engagement a été récemment récompensé par la Union Européenne qui a choisi le Projet P.S.V. (Polishing Sludge Valorisation) de Cooperativa Ceramica d'Imola comme instrument de recherche à harmoniser dans le cadre du Programme LIFE de la Commission européenne.

PROJET P.S.V. DE COOPERATIVA CERAMICA D'IMOLA LIFE05 ENV/IT/00875

Le Projet P.S.V. de Cooperativa Ceramica d'Imola prévoit la réalisation d'un modèle écologique visant à l'exploitation des déchets provenant de l'usinage des matières céramiques ainsi que des produits analogues, par un procédé de minéralisation à haute température.

Cooperativa Ceramica d'Imola für das Ambiente

Die Cooperativa Ceramica d'Imola agiert mit dem Bewusstsein, dass die Umwelt ein gemeinsames zu schützendes und zu verteidigendes Gut ist und setzt sich deshalb seit jeher dafür ein, dass die Produktionsanlagen und die Produktionstätigkeiten so weit wie möglich in das Einsatzgebiet integriert werden. Der Einsatz in diese Richtung wurde kürzlich von der Europäischen Union ausgezeichnet, da das Projekt P.S.V. (Polishing Sludge Valorisation) der Cooperativa Ceramica d'Imola als Forschungskonzept ausgewählt wurde, das in das Programm "Life Ambiente" eingegliedert werden soll.

PROJEKT P.S.V. DER COOPERATIVA CERAMICA D'IMOLA LIFE05 ENV/IT/00875

Das Projekt P.S.V. (Polishing Sludge Valorisation) der Cooperativa Ceramica d'Imola beinhaltet die Realisierung eines Ökoprozesses für die Aufwertung der Nebenprodukte, die bei der Verarbeitung von Keramikmaterialien und anderen Produkten durch die Mineralisierung bei hoher Temperatur entstehen.

Cooperativa Ceramica d'Imola para el medioambiente

Cooperativa Ceramica d'Imola, consciente de que el medioambiente es un bien común a proteger y defender, desde siempre se compromete a integrar lo más posible sus establecimientos industriales y actividades productivas en el territorio en el que se ubican. Este compromiso ha sido recientemente reconocido por la Unión Europea que eligió el proyecto P.S.V. de Cooperativa Ceramica d'Imola como medio de investigación bajo el marco del programa Life Medioambiente.

PROYECTO P.S.V. DE COOPERATIVA CERAMICA D'IMOLA LIFE05 ENV/IT/00875

El Proyecto P.S.V. (Polishing Sludge Valorisation) de Cooperativa Ceramica d'Imola contempla la realización de un proceso ecológico para aprovechar los finos procedentes de la producción de materiales cerámicos y similares mediante mineralización a elevada temperatura.



Cooperativa Ceramica d'Imola per l'ambiente



Italiani dal 1874



Progetto life

European Commission

LIFE05 ENV / IT / 000875 P.S.V.

Cooperativa Ceramica d'Imola, consapevole che l'ambiente è un bene comune da tutelare e difendere, da sempre è impegnata affinché impianti produttivi ed attività produttive siano integrate il più possibile all'interno del territorio che le accoglie. L'impegno in questa direzione ha ottenuto il recente riconoscimento da parte dell'Unione Europea che ha scelto il progetto P.S.V. di Cooperativa Ceramica d'Imola come strumento di ricerca da inquadrare all'interno del programma Life Ambiente.

Progetto P.S.V. di Cooperativa Ceramica d'Imola Life05 ENV/IT/00875

Il Progetto P.S.V. (Polishing Sludge Valorisation) di Cooperativa Ceramica d'Imola prevede la realizzazione di un processo ecologico per la valorizzazione dei reflui derivanti dalle lavorazioni dei materiali ceramici e affini tramite mineralizzazione ad elevata temperatura.



COOPERATIVA CERAMICA D'IMOLA

Via V. Veneto, 13 - 40026 Imola BO - Italia

Tel. +39 0542 601601 - Fax +39 0542 31749

www.imolaceramica.it - imola@imolaceramica.it

designcollection

