

PAMESA
CERAMICA

20x45,2

PASTA ROJA - RED BODY TILES

20x45,2

PASTA ROJA - RED BODY TILES





ALASKA Y TORONTO

APULIA

GELA

LIPARI

RELIEVES

SALERNO

STABIA

TORCELLO

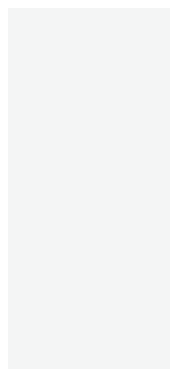
VELIA

PAMESA
CERAMICA

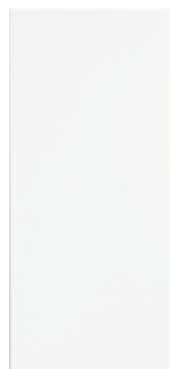
Alaska y Toronto

20 x 45,2 REVESTIMIENTO PASTA ROJA

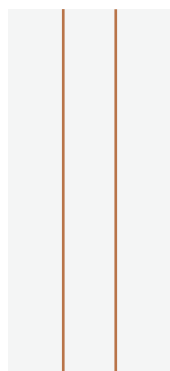
8" x 18" RED BODY WALL TILES



ALASKA Blanco
20 x 45,2 **M09**
2.715.12.5036



TORONTO Blanco
20 x 45,2 **M09**
2.715.12.5037



RLV.2. ALASKA Blanco
20 x 45,2 **M14**
2.715.12.2701



RLV.2. TORONTO Blanco
20 x 45,2 **M14**
2.715.12.2702



Dec. SAFARI-1 Blanco 6
20 x 45,2 **P79** 8,74
5.714.12.5241



Dec. SAFARI-2 Blanco 6
20 x 45,2 **P79** 8,74
5.714.12.5242



List. SAFARI Blanco 26
5 x 45,2 **P32** 9,90
5.616.12.2381



List. METAL 15
2 x 45,2 **P41** 3
5.632.1.1211



List. TIBOR Bronce 10
0,6 x 25 **P27** 0,40
5.679.234.814



Mold. METAL 27
1,2 x 20 **P10** 1,08
5.369.1.1211



Dec. KITCHEN Blanco 6
20 x 45,2 **P81** 8,74
5.714.12.2388



Dec. ZOBRA Blanco 6
20 x 45,2 **P59** 8,74
5.714.12.2403

Nota: Pavimentos coordinados serie CREA 31,6 x 31,6 PASTA ROJA

Note: Coordinated floor tiles CREA 31,6 x 31,6 series PASTA ROJA



RVT0. / WALL: **ALASKA BLANCO 20 x 45,2** - DEC. KITCHEN BLANCO 20 x 45,2 - LIST. METAL 2 x 45,2
PVTO. / FLOOR: **CREA BLANCO 31,6 x 31,6**

Apulia

20 x 45,2 REVESTIMIENTO PASTA ROJA
8" x 18" RED BODY WALL TILES



APULIA Marfil
20 x 45,2 **M09**
2.715.33.2370



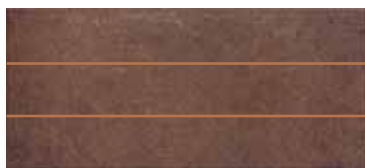
APULIA Marrón
20 x 45,2 **M09**
2.715.9.2370



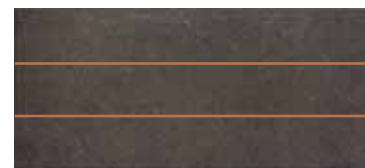
APULIA Grafito
20 x 45,2 **M09**
2.715.68.2370



RLV.2. APULIA Marfil
20 x 45,2 **M14**
2.715.33.2378



RLV.2. APULIA Marrón
20 x 45,2 **M14**
2.715.9.2378



RLV.2. APULIA Grafito
20 x 45,2 **M14**
2.715.68.2378



Dec. TARENTO Marfil
20 x 45,2 **P75** 6 8,74
5.714.33.913



Dec. TOSCANA Marfil
20 x 45,2 **P89** 6 8,74
5.714.33.2382



Dec. TOSCANA Jaspe
20 x 45,2 **P89** 6 8,74
5.714.29.2382



List. LINEAS Marrón
5 x 45,2 **P25** 6 2,10
5.723.9.503



List. CALABRIA Marrón
5 x 45,2 **P56** 26 9,90
5.723.9.2379



List. TIBOR Bronce
0,6 x 25 **P27** 10 0,40
5.679.234.814



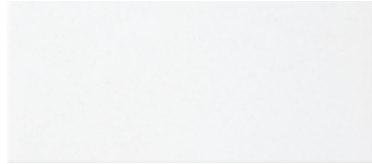
List. TIBOR Oro
0,6 x 25 **P27** 10 0,40
5.679.32.814



RVTO. / WALL: APULIA MARFIL 20 x 45,2 - APULIA GRAFITO 20 x 45,2 - LIST. TIBOR BRONCE 0,6 x 25 - DEC. TOSCANA MARFIL 20 x 45,2
PVTO. / FLOOR: MEDICI GRAFITO 31,6 x 31,6

Gela

20 x 45,2 REVESTIMIENTO PASTA ROJA
8" x 18" RED BODY WALL TILES



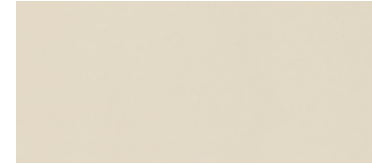
GELA Blanco
20 x 45,2 **M09**
2.715.12.2372



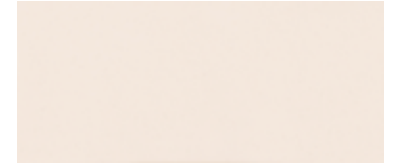
GELA Ocean
20 x 45,2 **M09**
2.715.171.2372



GELA Marfil
20 x 45,2 **M09**
2.715.33.2372



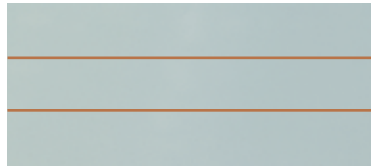
GELA Cacao
20 x 45,2 **M09**
2.715.246.2372



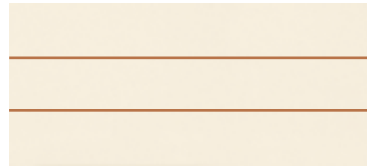
GELA Rosa
20 x 45,2 **M09**
2.715.6.2372



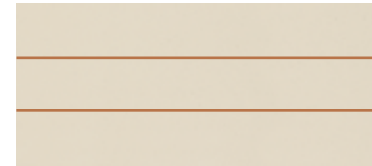
RLV.2. GELA Blanco
20 x 45,2 **M14**
2.715.12.2703



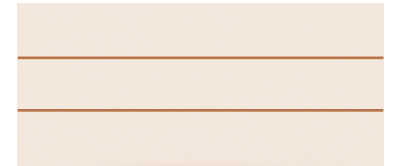
RLV.2. GELA Ocean
20 x 45,2 **M14**
2.715.171.2703



RLV.2. GELA Marfil
20 x 45,2 **M14**
2.715.33.2703



RLV.2. GELA Cacao
20 x 45,2 **M14**
2.715.246.2703



RLV.2. GELA Rosa
20 x 45,2 **M14**
2.715.6.2703



Dec. LAGUNA Blanco
20 x 45,2 **P59**
5.714.12.522 6 8,74 150



Dec. GRAVINA Blanco
20 x 45,2 **P58**
5.714.12.2390 6 8,74 150



Dec. LAGUNA Marfil
20 x 45,2 **P59**
5.714.33.522 6 8,74 150



Dec. GRAVINA Marfil
20 x 45,2 **P58**
5.714.33.2390 6 8,74 150



Dec. ORCHIDS Blanco
20 x 45,2 **P81**
5.714.12.2389 6 8,74 150





List. LINEAS Cacao
5 x 45,2 **P25**
5.723.246.503 6 2,10 150





List. LINEAS Rosa
5 x 45,2 **P25**
5.723.6.503 6 2,10 150

Nota: Pavimentos coordinados serie CREA 31,6 x 31,6 PASTA ROJA
Note: Coordinated floor tiles CREA 31,6 x 31,6 series PASTA ROJA



Dec. ARBOLEDA PACK-2 Blanco 1 
 40 x 45,2 P123 2,92 
 5.724.12.2412

List. TIBOR Plata 10 
 0,6 x 25 P27 0,40 
 5.679.31.814

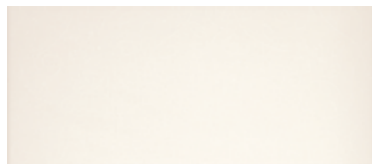
List. TIBOR Oro 10 
 0,6 x 25 P27 0,40 
 5.679.32.814



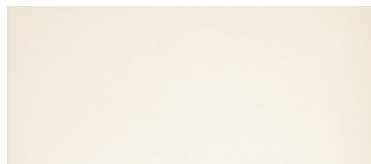
RVTO. / WALL: GELA ROSA 20 x 45,2 - RLV.2. GELA ROSA 20 x 45,2 - GELA CACAO 20 x 45,2 - RLV.2. GELA CACAO 20 x 45,2 - DEC. ARBOLEDA PACK-2 BLANCO 40 x 45,2
 PVTO. / FLOOR: CREA CACAO 31,6 x 31,6

Lipari

20 x 45,2 REVESTIMIENTO PASTA ROJA
8" x 18" RED BODY WALL TILES



Dec. LIPARI Blanco
20 x 45,2 **M09**
2.715.12.2621



Dec. LIPARI Marfil
20 x 45,2 **M09**
2.715.33.2621



LIPARI Azul
20 x 45,2 **M09**
2.715.4.2371



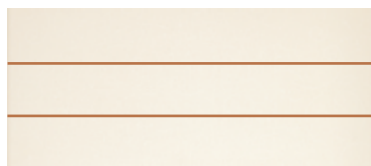
LIPARI Marrón
20 x 45,2 **M09**
2.715.9.2371



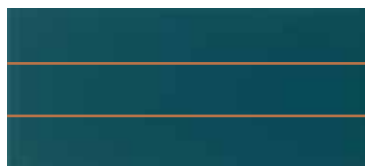
LIPARI Grafito
20 x 45,2 **M09**
2.715.68.2371



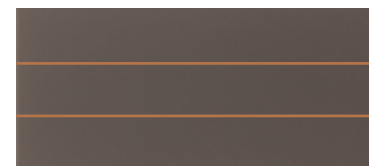
RLV.2. DEC. LIPARI Blanco
20 x 45,2 **M14**
2.715.12.2704



RLV.2. DEC. LIPARI Marfil
20 x 45,2 **M14**
2.715.33.2704



RLV.2. LIPARI Azul
20 x 45,2 **M14**
2.715.4.2705



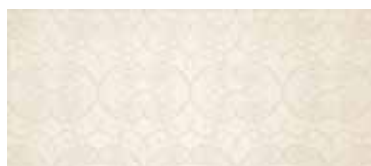
RLV.2. LIPARI Marrón
20 x 45,2 **M14**
2.715.9.2705



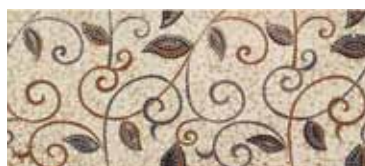
RLV.2. LIPARI Grafito
20 x 45,2 **M14**
2.715.68.2705



Dec. SALINA Blanco 6
20 x 45,2 **P77** 8,74
5.714.12.2148



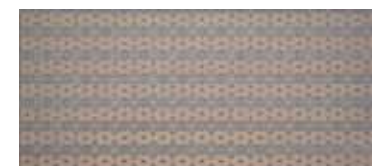
Dec. SALINA Marfil 6
20 x 45,2 **P77** 8,74
5.714.33.2148



Dec. TARENTO Marfil 6
20 x 45,2 **P75** 8,74
5.714.33.913



Dec. EOLIAS Jaspe 6
20 x 45,2 **P81** 8,74
5.714.29.2380



Dec. VULCANO Jaspe 6
20 x 45,2 **P77** 8,74
5.714.29.2015



List. CALABRIA Azul 26
5 x 45,2 **P56** 9,90
5.723.4.2379



List. LINEAS Azul 6
5 x 45,2 **P25** 2,10
5.723.4.503



List. ISSY 17
3 x 25 **P57** 2,80
28.578.1.1708

Nota: Pavimentos coordinados serie MEDICI 31,6 x 31,6 PASTA ROJA

Note: Coordinated floor tiles MEDICI 31,6 x 31,6 series PASTA ROJA

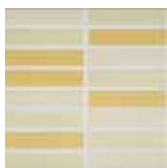


RVTO. / WALL: DEC. LIPARI BLANCO 20 x 45,2 - LIPARI GRAFITO 20 x 45,2 - RLV.2. LIPARI GRAFITO 20 x 45,2 - DEC. VULCANO JASPE 20 x 45,2 - DEC. SALINA BLANCO 20 x 45,2
PVTO. / FLOOR: MEDICI GRAFITO 31,6 x 31,6

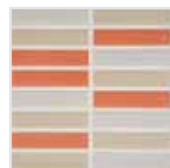
Relieves

20 x 20 REVESTIMIENTO PASTA ROJA

8" x 8" RED BODY WALL TILES



RLV. TESELA Amarillo
20 x 20 **M08**
2.290.11.2624



RLV. TESELA Naranja
20 x 20 **M08**
2.290.57.2624



RLV. TESELA Azul
20 x 20 **M08**
2.290.4.2624



RLV. TESELA Verde
20 x 20 **M08**
2.290.5.2624



RLV. TESELA Gris
20 x 20 **M08**
2.290.2.2624



RLV. FUME Ambar
20 x 20 **M08**
2.290.126.2629



RLV. FUME Beige
20 x 20 **M08**
2.290.7.2629



RLV. FUME Malva
20 x 20 **M08**
2.290.70.2629

Nota: Revestimientos coordinados serie ALASKA Y TORONTO 20 x 20 PASTA ROJA

Note: Coordinated wall tiles ALASKA Y TORONTO 20 x 20 series PASTA ROJA

Relieves

20 x 20 REVESTIMIENTO PASTA ROJA
8" x 8" RED BODY WALL TILES



RLV. LIN. PIEDRA Beige
20 x 20 **M08**
2.290.7.2623



RLV. LIN. PIEDRA Noce
20 x 20 **M08**
2.290.160.2623



RLV. LIN. PIEDRA Perla
20 x 20 **M08**
2.290.37.2623



RLV. LIN. PIEDRA Marengo
20 x 20 **M08**
2.290.28.2623



RLV. LIN. PIEDRA Negro
20 x 20 **M08**
2.290.3.2623



RLV. LIN. MADERA Arce
20 x 20 **M08**
2.290.198.2625



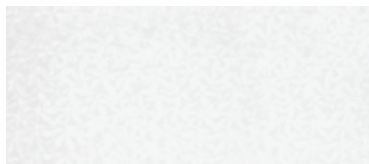
RLV. LIN. MADERA Roble
20 x 20 **M08**
2.290.36.2625



RLV. LIN. MADERA Wengué
20 x 20 **M08**
2.290.197.2625

Salerno

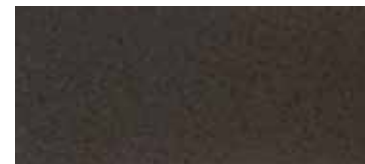
20 x 45,2 REVESTIMIENTO PASTA ROJA
8" x 18" RED BODY WALL TILES



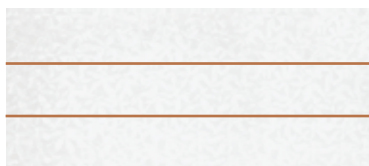
SALERNO Blanco
20 x 45,2 **M09**
2.715.12.1523



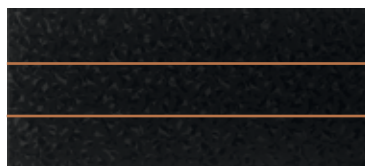
SALERNO Negro
20 x 45,2 **M09**
2.715.3.1523



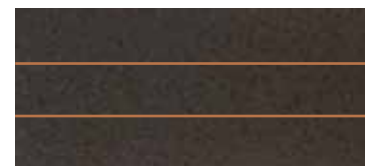
SALERNO Marrón
20 x 45,2 **M09**
2.715.9.1523



RLV.2. SALERNO Blanco
20 x 45,2 **M14**
2.715.12.2706



RLV.2. SALERNO Negro
20 x 45,2 **M14**
2.715.3.2706

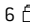
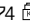


RLV.2. SALERNO Marrón
20 x 45,2 **M14**
2.715.9.2706

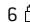
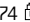


Dec. EBOLI Blanco 6 
20 x 45,2 **P77** 8,74 
5.714.12.2384





Dec. VIDRIERA Blanco 6 
20 x 45,2 **P61** 8,74 
5.714.12.518



Dec. CALAS Blanco 6 
20 x 45,2 **P81** 8,74 
5.714.12.506



List. CAMPANIA Blanco 6 
5 x 45,2 **P25** 2,10 
5.723.12.2407



List. METAL 15 
2 x 45,2 **P41** 3 
5.632.1.1211



Mold. METAL 27 
1,2 x 20 **P10** 1,08 
5.369.1.1211

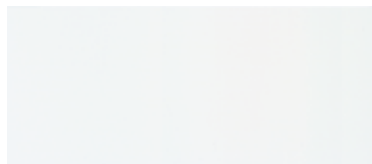
Nota: Pavimentos coordinados serie CREA 31,6 x 31,6 PASTA ROJA
Note: Coordinated floor tiles CREA 31,6 x 31,6 series PASTA ROJA



RVTO. / WALL: **SALERNO BLANCO 20 x 45,2 - RLV.2. SALERNO BLANCO 20 x 45,2 -SALERNO NEGRO 20 x 45,2 - RLV.2. SALERNO NEGRO 20 x 45,2 - DEC. CALAS BLANCO 20 x 45,2**
PVTO. / FLOOR: **CREA NEGRO 31,6 x 31,6**

Stabia

20 x 45,2 REVESTIMIENTO PASTA ROJA
8" x 18" RED BODY WALL TILES



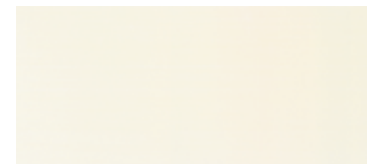
STABIA Blanco
20 x 45,2 **M09**
2.715.12.2373



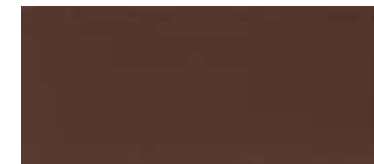
STABIA Malva
20 x 45,2 **M09**
2.715.70.2373



STABIA Negro
20 x 45,2 **M09**
2.715.3.2373



STABIA Marfil
20 x 45,2 **M09**
2.715.33.2373



STABIA Marrón
20 x 45,2 **M09**
2.715.9.2373



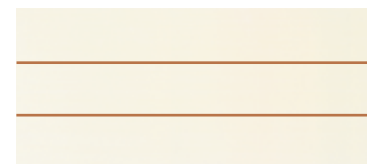
RLV.2. STABIA Blanco
20 x 45,2 **M14**
2.715.12.2707



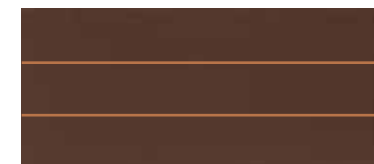
RLV.2. STABIA Malva
20 x 45,2 **M14**
2.715.70.2707



RLV.2. STABIA Negro
20 x 45,2 **M14**
2.715.3.2707



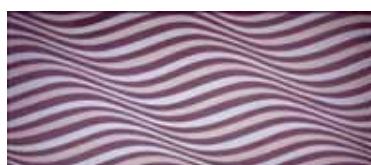
RLV.2. STABIA Marfil
20 x 45,2 **M14**
2.715.33.2707



RLV.2. STABIA Marrón
20 x 45,2 **M14**
2.715.9.2707



Dec. LUSTRE Blanco
20 x 45,2 **P58**
5.714.12.2229



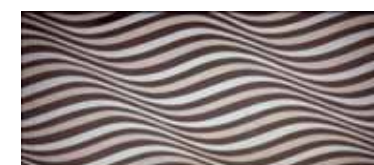
Dec. LUSTRE Malva
20 x 45,2 **P58**
5.714.70.2229



Dec. LUSTRE Negro
20 x 45,2 **P58**
5.714.3.2229



Dec. LUSTRE Marfil
20 x 45,2 **P58**
5.714.33.2229



Dec. LUSTRE Marrón
20 x 45,2 **P58**
5.714.9.2229



Nota: Pavimentos coordinados serie CREA 31,6 x 31,6 PASTA ROJA
Note: Coordinated floor tiles CREA 31,6 x 31,6 series PASTA ROJA



RVTO. / WALL: **STABIA BLANCO 20 x 45,2 - STABIA NEGRO 20x 45,2 - DEC. SILVER NEGRO 20 x 45,2**
PVTO. / FLOOR: **CREA NEGRO 31,6 x 31,6**

Stabia

20 x 45,2 REVESTIMIENTO PASTA ROJA

8" x 18" RED BODY WALL TILES



Dec. MISONY Blanco 6
20 x 45,2 **P84** 8,74
5.714.12.2383



Dec. LAMINAS Blanco 6
20 x 45,2 **P81** 8,74
5.714.12.2386



Dec. SILVER Negro 6
20 x 45,2 **P77** 8,74
5.714.3.1323



Dec. MISONY Marfil 6
20 x 45,2 **P84** 8,74
5.714.33.2383



Dec. FRAGANCIA PACK-2 Blanco 1
40 x 45,2 **P123** 2,92
5.724.12.2414



List. PUNTOS Blanco 6
5 x 45,2 **P25** 2,10
5.723.12.2408



List. PUNTOS Marfil 6
5 x 45,2 **P25** 2,10
5.723.33.2408



List. METAL 15
2 x 45,2 **P41** 3
5.632.1.1211



Mold. METAL 27
1,2 x 20 **P10** 1,08
5.369.1.1211



List. ISSY 17
3 x 25 **P57** 2,80
28.578.1.1708



Dec. ESENCIA PACK-2 Marfil 1
40 x 45,2 **P123** 2,92
5.724.33.2411



Nota: Pavimentos coordinados serie CREA 31,6 x 31,6 PASTA ROJA

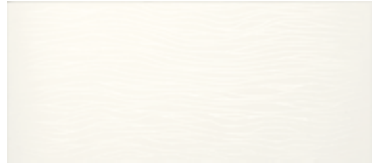
Note: Coordinated floor tiles CREA 31,6 x 31,6 series PASTA ROJA



RVTO. / WALL: STABIA BLANCO 20 x 45,2 - STABIA MALVA 20x 45,2 - DEC. FRAGANCIA BLANCO PACK-2 40 x 45,2
 RVTO. / WALL: STABIA BLANCO 20 x 45,2 - STABIA MARRÓN 20x 45,2 - DEC. LAMINAS BLANCO 20 x 45,2

Torcello

20 x 45,2 REVESTIMIENTO PASTA ROJA
8" x 18" RED BODY WALL TILES



TORCELLO Blanco
20 x 45,2 **M09**
2.715.12.2369



TORCELLO Gris
20 x 45,2 **M09**
2.715.2.2369



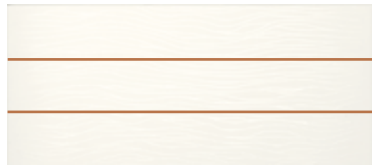
TORCELLO Marfil
20 x 45,2 **M09**
2.715.33.2369



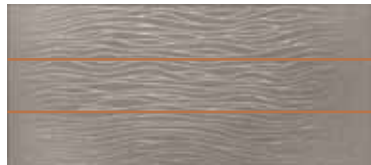
TORCELLO Camel
20 x 45,2 **M09**
2.715.220.2369



TORCELLO Musgo
20 x 45,2 **M09**
2.715.805.2369



RLV.2. TORCELLO Blanco
20 x 45,2 **M14**
2.715.12.2409



RLV.2. TORCELLO Gris
20 x 45,2 **M14**
2.715.2.2409



RLV.2. TORCELLO Marfil
20 x 45,2 **M14**
2.715.33.2409



RLV.2. TORCELLO Camel
20 x 45,2 **M14**
2.715.220.2409



RLV.2. TORCELLO Musgo
20 x 45,2 **M14**
2.715.805.2409



Dec. LAGUNA Blanco
20 x 45,2 **P59**
5.714.12.522

6
8,74



Dec. LAGUNA Gris
20 x 45,2 **P59**
5.714.2.522

6
8,74



Dec. LAGUNA Marfil
20 x 45,2 **P59**
5.714.33.522

6
8,74



Dec. LAGUNA Camel
20 x 45,2 **P59**
5.714.220.522

6
8,74



Dec. LAGUNA Musgo
20 x 45,2 **P59**
5.714.805.522

6
8,74



List. LINEAS Blanco
5 x 45,2 **P25**
5.723.12.503

6
2,10





List. LINEAS Marfil
5 x 45,2 **P25**
5.723.33.503

6
2,10

Nota: Pavimentos coordinados serie CREA 31,6 x 31,6 PASTA ROJA
Note: Coordinated floor tiles CREA 31,6 x 31,6 series PASTA ROJA




Dec. CINEMA PACK-2 Blanco 1 
 40 x 45,2 P123 2,92 
 5.724.12.2413



Dec. VENECIA Blanco 6 
 20 x 45,2 P72 8,74 
 5.714. 12.608



Dec. VENECIA Marfil 6 
 20 x 45,2 P72 8,74 
 5.714. 33.608



RVTO. / WALL: **TORCELLO BLANCO 20 x 45,2 - RLV.2. TORCELLO BLANCO 20 x 45,2 - DEC. CINEMA PACK-2 BLANCO 20 x 45,2 - TORCELLO MUSGO 20 x 45,2 - RLV.2. TORCELLO MUSGO 20 x 45,2** PVTO. / FLOOR: **CREA MUSGO 31,6 x 31,6**

Velia

20 x 45,2 REVESTIMIENTO PASTA ROJA
8" x 18" RED BODY WALL TILES



VELIA Blanco
20 x 45,2 **M09**
2.715.12.2375



VELIA Gris
20 x 45,2 **M09**
2.715.2.2375



VELIA Marengo
20 x 45,2 **M09**
2.715.28.2375



RLV.2. VELIA Blanco
20 x 45,2 **M14**
2.715.12.2708



RLV.2. VELIA Gris
20 x 45,2 **M14**
2.715.2.2708



RLV.2. VELIA Marengo
20 x 45,2 **M14**
2.715.28.2708



Dec. LAGUNA Marfil 6
20 x 45,2 **P59** 8,74
5.714.33.522



Dec. PARAJE Blanco 6
20 x 45,2 **P61** 8,74
5.714.12.2405



Dec. LAGUNA Gris 6
20 x 45,2 **P59** 8,74
5.714.2.522



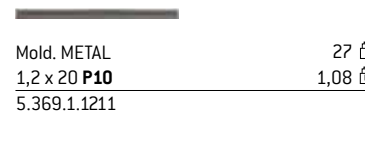
Dec. LUCANIA Blanco 6
20 x 45,2 **P61** 8,74
5.714.12.2404



List. METAL 15
2 x 45,2 **P41** 3
5.632.1.1211

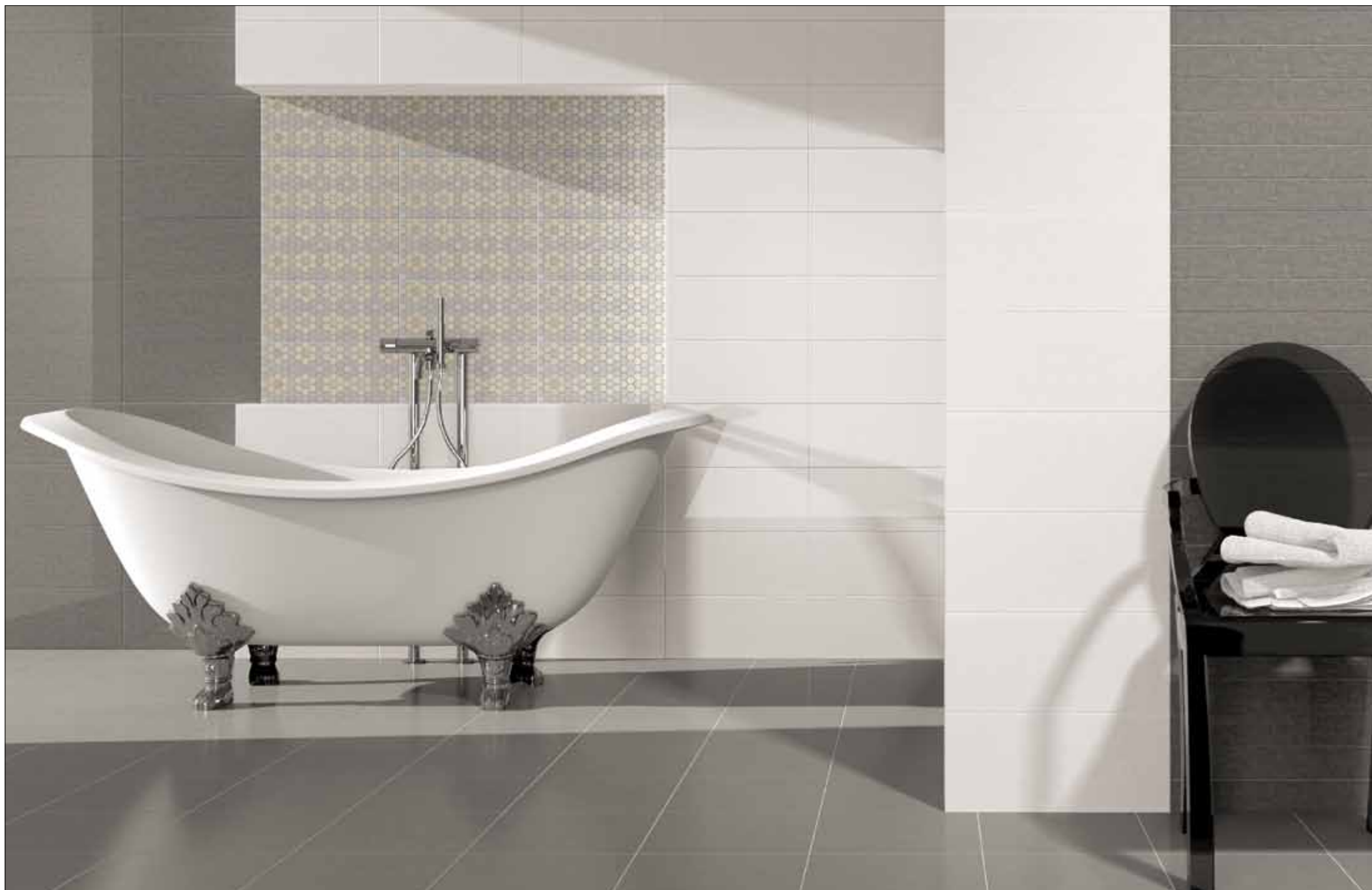


List. LINEAS Blanco 6
5 x 45,2 **P25** 2,10
5.723.12.503



Mold. METAL 27
1,2 x 20 **P10** 1,08
5.369.1.1211

Nota: Pavimentos coordinados serie CREA 31,6 x 31,6 PASTA ROJA
Note: Coordinated floor tiles CREA 31,6 x 31,6 series PASTA ROJA

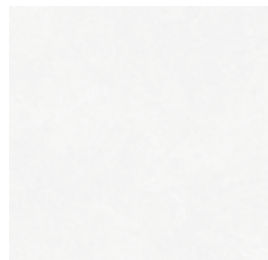


RVTO. / WALL: **VELIA BLANCO 20 x 45,2 - VELIA MARENGO 20 x 45,2 - RLV.2. VELIA MARENGO 20 x 45,2 - DEC. LUCANIA BLANCO 20 x 45,2**
PVTO. / FLOOR: **CREA MARENGO 31,6 x 31,6**

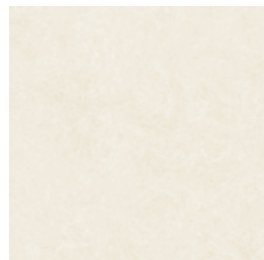
Crea

31,6 x 31,6 PAVIMENTO PASTA ROJA

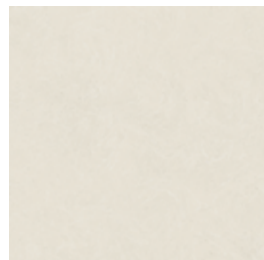
12,64" x 12,64" RED BODY FLOOR TILES



CREA Blanco PEI 4
31,6 x 31,6 **M08**
1.301.12.1937



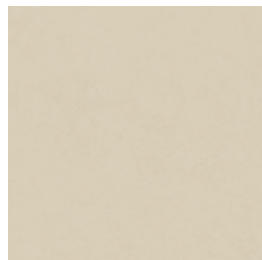
CREA Marfil PEI 4
31,6 x 31,6 **M08**
1.301.33.1937



CREA Nacar PEI 4
31,6 x 31,6 **M08**
1.301.30.1937



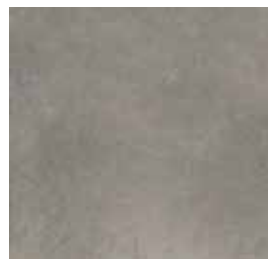
CREA Ocean PEI 3
31,6 x 31,6 **M08**
1.301.171.1937



CREA Cacao PEI 3
31,6 x 31,6 **M08**
1.301.246.1937



CREA Visón PEI 3
31,6 x 31,6 **M08**
1.301.24.1937



CREA Marengo PEI 3
31,6 x 31,6 **M08**
1.301.28.1937



CREA Rosa PEI 4
31,6 x 31,6 **M08**
1.301.6.1937



CREA Marrón PEI 2
31,6 x 31,6 **M08**
1.301.9.1937



CREA Negro PEI 2
31,6 x 31,6 **M08**
1.301.3.1937



CREA Malva PEI 2
31,6 x 31,6 **M08**
1.301.70.1937



CREA Camel PEI 3
31,6 x 31,6 **M08**
1.301.220.1937



CREA Musgo PEI 3
31,6 x 31,6 **M08**
1.301.805.1937

Medici

31,6 x 31,6 PAVIMENTO PASTA ROJA
12,64" x 12,64" RED BODY FLOOR TILES



MEDICI Blanco PEI 4
31,6 x 31,6 **M08**
1.301.12.953



MEDICI Marengo PEI 4
31,6 x 31,6 **M08**
1.301.28.953



MEDICI Grafito PEI 2
31,6 x 31,6 **M08**
1.301.68.953



MEDICI Marfil PEI 4
31,6 x 31,6 **M08**
1.301.33.953






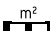

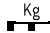


MEDICI Marrón PEI 2
31,6 x 31,6 **M08**
1.301.9.953




MEDICI Azul PEI 2
31,6 x 31,6 **M08**
1.301.4.953

Packing list

									
PASTA ROJA - RED BODY TILES	20 x 20	Rvto-Wall	M ²	25	1.00	75	75.00	17.40	1325
PASTA ROJA - RED BODY TILES	20 x 45,2	Rvto-Wall	M ²	17	1,54	55	84,70	24,00	1340
PASTA ROJA - RED BODY TILES	20 x 45,2	Rlv. 2	M ²	17	1,54	55	84,70	24,00	1340
PASTA ROJA - RED BODY TILES	31,6 x 31,6	Pvto-Floor	M ²	16	1.60	54	86.40	27.00	1484

Piezas Complementarias

 RODAPIÉ ROMO
7,4 x 31,6 **P03**
PZ/CJ 40
KG/CJ 15,30

PAMESA CERÁMICA, S.L. aplica una política de continuo desarrollo de sus productos y se reserva el derecho a realizar cambios en los productos, colores, especificaciones técnicas, packings y códigos sin previo aviso. PAMESA CERÁMICA ha realizado un esfuerzo considerable para que toda la información sea adecuada en el momento de la publicación del catálogo. A causa de las limitaciones del proceso de impresión los colores reproducidos pueden sufrir ligeras variaciones con respecto al producto original.

PAMESA CERÁMICA, S.L. operates a policy of continuous development and reserves the right to make changes to its products, colours, engineering specifications, packaging and codes without prior notice. PAMESA CERÁMICA has taken every effort to ensure that the information contained in the catalogue is correct at the time of publication. Due to the limitations of the printing process, the colours reproduced may vary slightly from the original product.

Características técnicas

REVESTIMIENTO PASTA ROJA - RED BODY WALL TILES GRUPO BIII Absorción de agua > 10%		NORMAS DE ENSAYO STANDARD	VALORES PRESCRITOS NORMA EN 14411 VALUE REQUIRED BY EN 14411 STANDARD	VALOR MEDIO AVERAGE VALUE
CARACTERÍSTICAS DIMENSIONALES DIMENSIONAL FEATURES		ISO 10545-2		CUMPLE LA NORMA CONFORMS TO STANDARD
ABSORCIÓN DE AGUA WATER ABSORPTION		ISO 10545-3	> 10%	16%
RESISTENCIA A LA FLEXIÓN MODULUS OF RUPTURE	RESISTENCIA A LA FLEXIÓN MODULUS OF RUPTURE FUERZA DE ROTURA BREAKING STRENGTH	ISO 10545-4	> 15 N / mm ² > 600 N	20 - 30 N / mm ² 700 - 1000 N
RESISTENCIA AL CUARTEO CRAZING RESISTANCE		ISO 10545-11	EXIGIDA REQUIRED	RESISTE / RESISTS
RESISTENCIA QUÍMICA CHEMICAL RESISTANCE	ÁCIDOS Y BASES ACIDS AND BASES PRODUCTOS DE LIMPIEZA Y REACTIVOS DE PISCINAS CLEANING PRODUCTS AND POOL REACTIVE AGENTS	ISO 10545-13	MÉTODO DE ENSAYO DISPONIBLE TEST METHOD AVAILABLE MÍNIMO GB MINIMUM GB	CUMPLE LA NORMA CONFORMS TO STANDARD CLASE GA / CLASS GA
RESISTENCIA A LAS MANCHAS RESISTANCE TO STAINS		ISO 10545-14	MÍNIMO CLASE 3 MINIMUM CLASS 3	CUMPLE LA NORMA CONFORMS TO STANDARD
PAVIMENTO PASTA ROJA - RED BODY FLOOR TILES GRUPO BIIa 3% < Absorción de agua < 6%		NORMAS DE ENSAYO STANDARD	VALORES PRESCRITOS NORMA EN 14411 VALUE REQUIRED BY EN 14411 STANDARD	VALOR MEDIO AVERAGE VALUE
CARACTERÍSTICAS DIMENSIONALES DIMENSIONAL FEATURES		ISO 10545-2		CUMPLE LA NORMA CONFORMS TO STANDARD
ABSORCIÓN DE AGUA WATER ABSORPTION		ISO 10545-3	3% < E < 6%	5%
RESISTENCIA A LA FLEXIÓN MODULUS OF RUPTURE	RESISTENCIA A LA FLEXIÓN MODULUS OF RUPTURE FUERZA DE ROTURA BREAKING STRENGTH	ISO 10545-4	> 22 N / mm ² > 1100 N	30 - 40 N / mm ² 1400 - 1900 N
RESISTENCIA AL CUARTEO CRAZING RESISTANCE		ISO 10545-11	EXIGIDA REQUIRED	RESISTE / RESISTS
RESISTENCIA QUÍMICA CHEMICAL RESISTANCE	ÁCIDOS Y BASES ACIDS AND BASES PRODUCTOS DE LIMPIEZA Y REACTIVOS DE PISCINAS CLEANING PRODUCTS AND POOL REACTIVE AGENTS	ISO 10545-13	MÉTODO DE ENSAYO DISPONIBLE TEST METHOD AVAILABLE MÍNIMO GB MINIMUM GB	CUMPLE LA NORMA CONFORMS TO STANDARD CLASE GA / CLASS GA
RESISTENCIA A LAS MANCHAS RESISTANCE TO STAINS		ISO 10545-14	MÍNIMO CLASE 3 MINIMUM CLASS 3	CUMPLE LA NORMA CONFORMS TO STANDARD

PAMESA CERAMICA

PAMESA CERÁMICA S.L.

Cno. Alcora, 8 - Apdo. Correos 14 - 12550 ALMAZORA - Castellón - SPAIN

Tel.: 34 - 964 50 75 00 - Telefax: 34 - 964 52 27 16 / 34 - 964 53 27 31

e-mail: nacional@pamesa.com / export@pamesa.com / web: www.pamesa.com

